

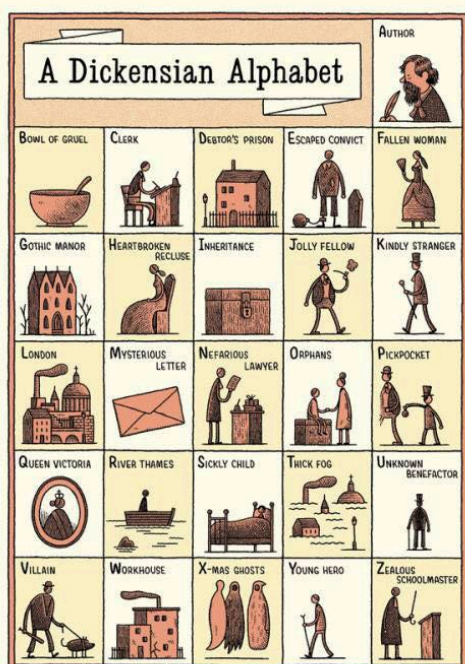
**Villain** – a character whose evil actions or motives are responsible for problems, harm or damage.

**Key vocabulary:** can you add a synonym and/or definition?

|               |                                                                                  |
|---------------|----------------------------------------------------------------------------------|
| Villainous    | Relating to or guilty of wicked or criminal behaviour.                           |
| Vengeful      | Seeking to harm someone in return for a perceived injury.                        |
| Ruthless      | Having or showing no pity or compassion for others.                              |
| Spiteful      | Showing or caused by malice.                                                     |
| Infamous      | Well known for some bad quality or deed; wicked.                                 |
| Machiavellian | Cunning, scheming, and unscrupulous, especially in politics.                     |
| Devious       | Showing a skilful use of underhand tactics to achieve goals.                     |
| Amoral        | Lacking a moral sense; unconcerned with the rightness or wrongness of something. |
| Unscrupulous  | Having or showing no moral principles; not honest or fair.                       |
| Corrupt       | Evil or morally depraved.                                                        |

**Connectives:**

|              |
|--------------|
| Similarly... |
| Likewise...  |
| As with...   |
| Both...      |
| Equally...   |
| However...   |
| Unlike...    |
| Although...  |



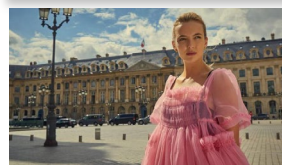
**Moral conscience** – is the inner sense of what is right or wrong in how we conduct ourselves and our motivations for doing things. It compels us towards doing the right thing.

## 7 villain archetypes:

- The moustache twirler
- The ancient evil
- The Bully
- The Mastermind
- The Dark Lord
- The Mirror
- Someone else's hero

## Comparative PEA structure:

- Point
- Evidence
- Analysis
  - What does the quote reveal?
  - What is the effect on the reader
  - KWA
- Comparative point – this is **similar/different to...** because...
- Evidence
- Analysis – how does it compare?
  - What does the quote reveal?
  - What is the effect on the reader
  - KWA
- Final comparative sentence



|                     |                                                                                                                                                                                                                                                                                                                                                                                                                                                                                                                                                                                                     |
|---------------------|-----------------------------------------------------------------------------------------------------------------------------------------------------------------------------------------------------------------------------------------------------------------------------------------------------------------------------------------------------------------------------------------------------------------------------------------------------------------------------------------------------------------------------------------------------------------------------------------------------|
| Lady Macbeth        | Lady Macbeth is one of Shakespeare's most famously evil female characters. Lady Macbeth plots the murder of King Duncan and convinces her husband to carry it out. She is cunning and often blackmails her husband, Macbeth.                                                                                                                                                                                                                                                                                                                                                                        |
| Villanelle          | Villanelle is a main character in the novel <i>Codename Villanelle</i> which has recently been adapted into the television series <i>Killing Eve</i> . Villanelle was orphaned before being trained as a ruthless assassin. She plays many different roles in order to escape MI5 and Eve Polastri closing in on her.                                                                                                                                                                                                                                                                               |
| Hook                | Hook is the main antagonist of JM Barrie's <i>Peter Pan</i> . He lost his arm during a battle with Peter Pan and a crocodile ate it. Since having a taste of Hook, the crocodile now follows Hook everywhere. Hook's arm is replaced with an iron hook, hence the name.                                                                                                                                                                                                                                                                                                                             |
| Long John Silver    | Long John Silver is a very cunning character. We first meet him under a false name as he is pretending to be the chef's cook. He uses this as a disguise so that he can steal the treasure for himself and live a prosperous life. Although Long John Silver has only one leg, this does not stop him from moving across the ship's decks with ease.                                                                                                                                                                                                                                                |
| Vultures poem       | A gritty poem that is hard to read due to the harrowing subject matter. Achebe creates a dark and filthy environment in the poem. It depicts a truthful picture of the Belsen concentration camp. The commandant, in the poem, is none other than a representative of a class, who selflessly thinks of his own family even if thousands of families are rotting just around him.                                                                                                                                                                                                                   |
| Dickensian Villains | <b>Magwitch (Great Expectations):</b> Magwitch is an escaped convict and meet young Pip on a cold, foggy marsh. Pip helps Magwitch by providing him with food and a file to help him to escape. Magwitch has no money and is compared to a wild animal.<br><b>Fagin (Oliver Twist):</b> Fagin is portrayed as a criminal mastermind who kidnaps orphaned children and trains them to be pickpockets in return for sheltering and feeding them; he keeps the ill-gotten money for himself. He treats the children with cruelty, beating, and threatens to starve them if they do not do his bidding. |