



Don Lockwood

Gene Kelly



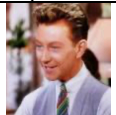
Lina Lamont

Jean Hagen



Kathy Selden

Debbie Reynolds



Cosmo Brown

Donald O'Connor



R.F. Simpson

Millard Mitchell



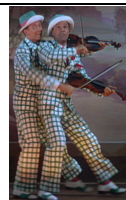
Zelda Zanders

Rita Moreno

Types of characters

- Hero
- Love interest
- Talent
- Intelligent character
- Antagonist
- Side kick
- Comedic relief

Important Micro features



What are the issues explored in 'Singin' in the rain'?

Reality V Fantasy

What does this mean? Where do we see it?

Humour (approaching situations)

What does this mean? Where do we see it?

Techology (influences in life)

What does this mean? Where do we see it?

Love (self and romantic)

What does this mean? Where do we see it?

Fame

What does this mean? Where do we see it?

Gender expectations

What does this mean? Where do we see it?

Persistence (The show must go on)

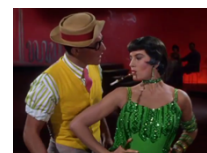
What does this mean? Where do we see it?

Ambition and imagination.

What does this mean? Where do we see it?

Social expectations Vs Moral responsibility.

What does this mean? Where do we see it?



Key songs and scenes

'Fit as a fiddle' (Montage type scene), 'Beautiful girl' montage (converting to talkies), 'Make 'em laugh', 'You were meant for me', 'Moses supposes', 'Good morning', 'Singin' in the rain', 'Switcheroo', 'You are my lucky star'

Structures to remember

a) Identify **one** genre convention used in your chosen film. [1]. *What is a genre convention we would expect in a musical?*

Remember, pick a good one you know a lot about, you will have to write about it in other films (how it is typically used) and in this film.

(b) Briefly outline why conventions are used in genre films. [4]

- What are genre conventions?
- Why do we need them? (Should think of 3 reasons - WHY is each important).

You must consider why a STUDIO would want them, why an AUDIENCE would want them and you must also consider why the film itself would need to use them. You should aim to have specific examples for each. For example, to keep the audience by meeting their expectations, as The Greatest Showman does or to challenge the audience by subverting expectation the way 'La la land does.'

(c) Explore how the convention you have identified is used in **one** sequence from your chosen film. In your answer, refer to at least **one** key element of film (e.g. cinematography, mise-en-scène, editing or sound). [10] **ALWAYS LOOK AT HOW ANSWERS BUILD AND DEVELOP.**

P: What is the convention and which sequence do we see it in?

E: link to theme/central idea + micro feature - what, when, why it is used and link with central idea. You must try and cluster. Don't JUST pick one micro element if a prop and hair both do it at this point in the sequence talk about both.

link to theme/central idea + micro feature of MES- what, when, why it is used and link with central idea + HOW and WHY this micro element supports or changes the idea. You must try and cluster.

Don't JUST pick one micro element if a prop and hair both do it at this point in the sequence talk about both.

link to theme/central idea + micro feature of MES- what, when, why it is used and link with central idea + HOW and WHY this micro element supports or changes the idea. You must try and cluster.

Don't JUST pick one micro element if a prop and hair both do it at this point in the sequence talk about both.

E: Director intent at this point and linked to this convention?

How does the audience respond?

Singin' In The Rain (Donen & Kelly, 1952)

Metro-Goldwyn-Mayer (MGM)

\$2.5 Million

- Set in Hollywood in the late 1920s after the release of the 1927 hit 'The Jazz Singer'.
- A film about the film-making process!
- Explores the development of 1920s sound revolution in film and the difficulties of making the transition from silent films to 'talkies'.

