



John Travolta as Danny Zuko



Olivia Newton-John as Sandy Olsson



Jeff Conaway as Kenickie



Stockard Channing as Rizzo



Barry Pearl as Doody



Didi Conn as Frenchy



Michael Tucci as Sonny LaTierri



Dinah Manoff as Marty Maraschino



Kelly Ward as Putzie



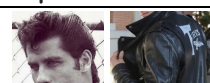
Jamie Donnelly as Jan

Types of characters

Hero

Love interest
Intelligent character
Sporty characters
Antagonist
Side kick
Comedic relief

Important mise en scène



Key songs and scenes

'Grease', 'Summer Nights', 'Hopelessly devoted to you', 'You're the one that I want', 'Sandy' - stranded at the drive in, 'Beauty school drop out', 'Sandra Dee', 'Grease Lightnin'', 'Born to hand jive', 'There are worse things I could do', 'Look at me, I'm Sandra Dee (reprise)', 'We go together.'

Structures to remember

- (a) Identify **one** example of cinematography used in your chosen film. [1] **What is a camera shot/angle/movement used in the film? You could also talk about the framing or the lighting but pick carefully. Remember, pick a good one you know a lot about, you will have to write about it in other films (how it is typically used) and in this film.**
- (b) Briefly explain what this example of cinematography typically suggests. [4] **(Typically means usually. So, why is a high angle shot typically used? Can you think of two or more reasons?)**
- What is the shot/angle/movement? - How is it normally used? (Give examples to help clarify) - You must have 3 examples in mind, with specific films in mind. For each HOW, WHY is it typically done in this way?
- (c) Explore how this example of cinematography is used in **one** sequence from your chosen film. [10]
- P:** What is the type of cinematography and which sequence do we see it in + the central idea it creates?
- E:** - link to theme/central idea in the scene + type of cinematography- what, when, why it is used and link with central idea. **You must try and cluster. Don't JUST pick one micro element if a prop and hair both do it at this point in the sequence talk about both.**
- link to theme/central idea in the scene + type of cinematography- what, when, why it is used and link with central idea + HOW and WHY this micro element supports or changes the idea. **You must try and cluster. Don't JUST pick one micro element if a prop and hair both do it at this point in the sequence talk about both.**
 - link to theme/central idea in the scene + type of cinematography- what, when, why it is used and link with central idea + HOW and WHY this micro element supports or changes the idea. **You must try and cluster. Don't JUST pick one micro element if a prop and hair both do it at this point in the sequence talk about both.**
- E:** Director intent at this point and linked to using this cinematography to create this feel/idea? How does the audience respond?

What are the issues explored in 'Grease'?

Reality V Fantasy

What does this mean? Where do we see it?

Humour (approaching situations)

What does this mean? Where do we see it?

Teenagers at school

What does this mean? Where do we see it?

Love (self and romantic)

What does this mean? Where do we see it?

Gender expectations

What does this mean? Where do we see it?

Persistence (The show must go on)

What does this mean? Where do we see it?

Ambition and imagination.

What does this mean? Where do we see it?

Social expectations Vs Moral responsibility.

What does this mean? Where do we see it?

Some links with 'Singin' in the rain.'

Make em laugh - 'Look at me, I'm Sandra Dee.'

You were meant for me - a bit like 'Hopelessly devoted to you' and 'Stranded at the driving' but different sentiment.

'You're the one that I want' has similar ideas but different presentation.

Moses supposes - Having fun as a group like in 'Summer Nights' and 'Grease Lightning.' Natural way blends into song.

Movement is a lot like them on the stairs with Eugene.

Good morning - Empowerment. Like 'Grease lightnin'

Singing in the rain - Solo like 'Stranded at the drive in' and follows and listens to feelings like 'Hopelessly devoted.'

Switcheroo - reveal of true character? 'Your the one that I want.'

Grease
(Kleiser,
USA,
1978)

Paramount
Pictures

\$6 Million

- Made in the 1970s, but set in the 1950s.
- Draws on the archetypal teenager from the original 50s teen movies & deals with issues of love, gang violence, teen pregnancy and friendship.
- Appeals to our love of nostalgia & was an antidote to punk & political protest at the time of its release.



Sid Caesar as Coach Calhoun



Eve Arden as Principal Greta McGee



Alice Ghostley as Mrs. Murdock



Frankie Avalon as Teen Angel



Eddie Deezen as Eugene Felsnic



Annette Charles as Charlene 'Cha Cha' DiGregorio



Dennis Cleveland Stewart as Leo (aka "Craterface")



Susan Buckner as Patty Simcox